

CONSTRUCTION FOREMAN

Little Rock, AR

Contact us today - 334-221-0062, Jon@InLine.com
or Apply Online: www.InLine.com/Careers

Job Description:

- Direct supervision of structure and foundation installation supporting ITS, roadway lighting, and traffic signal projects.
- Manage the transportation, loading, and secure handling of equipment and materials.
- Ensure job site, equipment, and materials security and public safety.
- Oversee installation of Maintenance of Traffic (MOT) according to location, road conditions, and DOT specifications.
- Uphold safety standards for employees and equipment operations.
- Handle administrative tasks including vehicle logs, daily job reports, and credit card receipts.
- Interpret project specifications and plans effectively.
- Maintain clear verbal and written communication with team members and supervisors.
- Coordinate logistics for personnel, equipment, and materials

Experience Requirements:

- Proficiency in operating various heavy equipment such as boom trucks, cranes, excavators, and more.
- Understanding of construction methods for structures and foundations.
- Proven ability to manage teams in dynamic environments.
- Familiarity with underground utility location and construction practices.
- At least 10 years of supervisory experience in structure and foundation construction.
- Minimum 15 years of experience in operating heavy construction equipment.
- Class A Commercial Driver's License with Air Brakes and Tanker Endorsements.
- Ability to pass pre-employment and random drug tests.
- Willingness to travel and work in various weather conditions.

Job Type: **Full-Time**

Benefits:

- Health, Dental, and Vision Insurance.
- 401K Retirement Plan
- Paid Leave
- Opportunities for growth in a cutting-edge industry.
- Only full-time employees eligible and a waiting period may apply.

Schedule:

- 8-10 hour shift Monday to Friday

Work Remotely:

- No

Industry:

Intelligent Transportation Systems (ITS)
Communication Networks and Electrical Construction

Our Culture is described as:

- Innovative and Forward-Thinking
- Team-Oriented and Collaborative.
- Safety and Quality First
- Commitment to Employee Training and Growth
- Respect and Integrity
- Community and Environmental Responsibility
- Dynamic and Supportive Work Environment



888-4-InLine | InLine.com

UNLEASH YOUR POTENTIAL

Now Hiring Laborers

Over 30 Positions Available

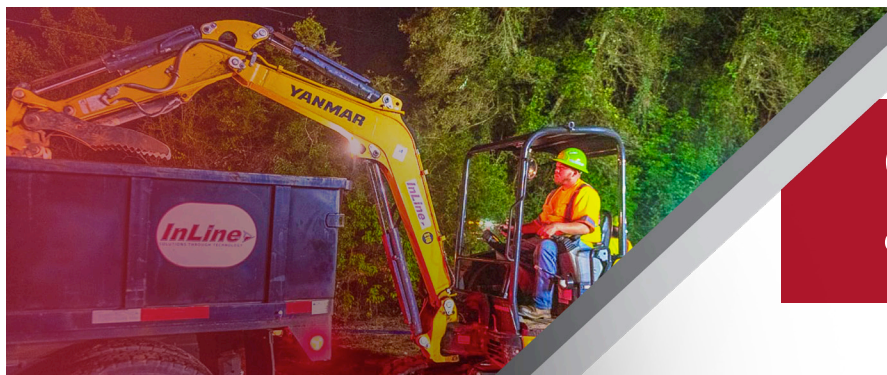
InLine, a leader in the Intelligent Transportation Systems (ITS) and Communication Network Construction industry, is currently seeking OVER 30 individuals to expand our talented team!

What We Offer:

- Comprehensive on-the-job training – no experience required!
- Opportunities for skilled laborers to work on state-of-the-art equipment.
- Competitive pay and benefits package, including health insurance.

Your Qualifications:

- Valid driver's license (CDL is a plus).
- Ability to work in physically demanding situations
- Eagerness to learn new skills
- A positive attitude and commitment to teamwork



Competitive Wages & Benefits Package

Contact us today – **334-221-0062** | jon@InLine.com

Learn more about InLine and how to apply | InLine.com/careers



InLine is an Equal Opportunity Employer. All qualified applicants will receive consideration for employment without regard to race, color, religion, sex, national origin, or protected veteran status and will not be discriminated against on the basis of disability.