

# SKILLED LABOR

I-40 Corridor Memphis to Little Rock, AR

**Contact us today to go to work tomorrow 334-221-0062, [Jon@InLine.com](mailto:Jon@InLine.com) or Apply Online: [www.InLine.com/Careers](http://www.InLine.com/Careers)**

## Job Description:

- Execute specialized tasks in the construction and maintenance of ITS and communication network infrastructure.
- Operate a variety of advanced power tools, machinery, and equipment proficiently.
- Lead and guide general laborers in routine construction activities.
- Read and interpret complex construction diagrams, blueprints, and project specifications.
- Provide technical support and troubleshooting on-site.
- Ensure compliance with safety protocols and regulations on all projects.
- Perform advanced site preparation, installation, repair, and maintenance tasks.
- Coordinate with project managers and engineers to ensure project completion according to plans.
- Oversee and ensure proper handling and storage of materials and equipment.
- Participate in training and mentorship programs for new laborers.

## Job Type: Full-Time

### Benefits:

- Health, Dental, and Vision Insurance.
- 401K Retirement Plan
- Paid Leave
- Opportunities for growth in a cutting-edge industry.
- Only full-time employees eligible and a waiting period may apply.

### Schedule:

- 8 hour shift Monday to Friday

### Work Remotely:

- No

### Salary:

- **\$19.00 - \$35.00 per hour**

### Industry:

**Intelligent Transportation Systems (ITS)  
Communication Networks and Electrical Construction**

### Our Culture is described as:

- Innovative and Forward-Thinking
- Team-Oriented and Collaborative.
- Safety and Quality First
- Commitment to Employee Training and Growth
- Respect and Integrity
- Community and Environmental Responsibility
- Dynamic and Supportive Work Environment



888-4-InLine | [InLine.com](http://InLine.com)

# UNLEASH YOUR POTENTIAL

## Now Hiring Laborers

### Over 30 Positions Available

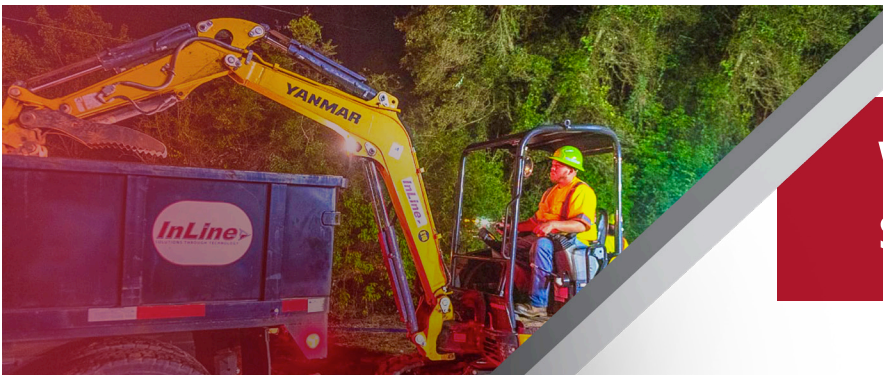
InLine, a leader in the Intelligent Transportation Systems (ITS) and Communication Network Construction industry, is currently seeking OVER 30 individuals to expand our talented team!

#### What We Offer:

- Comprehensive on-the-job training – no experience required!
- Opportunities for skilled laborers to work on state-of-the-art equipment.
- Competitive pay and benefits package, including health insurance.

#### Your Qualifications:

- Valid driver's license (CDL is a plus).
- Ability to work in physically demanding situations
- Eagerness to learn new skills
- A positive attitude and commitment to teamwork



**Wages Starting from  
\$15-\$36/Hour**

Contact us today – Go to work tomorrow! | **334-221-0062** | [jon@InLine.com](mailto:jon@InLine.com)

Learn more about InLine and how to apply | [InLine.com/careers](https://InLine.com/careers)



InLine is an Equal Opportunity Employer. All qualified applicants will receive consideration for employment without regard to race, color, religion, sex, national origin, or protected veteran status and will not be discriminated against on the basis of disability.