

# PROJECT MANAGER

Jacksonville, AR

**Contact us today -- Go to work tomorrow 334-221-0062, [Jon@InLine.com](mailto:Jon@InLine.com) or Apply Online: [www.InLine.com/Careers](http://www.InLine.com/Careers)**

## Job Description:

- Lead the installation and maintenance of electrical components of transportation systems, including ITS, Traffic Signals, Roadway Lighting, Communication Networks, and more.
- Utilize construction management software such as Microsoft Project, Primavera, Bid2Win, and Heavy Bids.
- Maintain accurate reports, logs, and shift communications in line with company and local practices.
- Liaise effectively with project management teams and transportation departments.
- Enforce quality control and ensure safe, efficient project execution.
- Manage and prepare pay estimates.
- Coordinate teams for optimal scheduling, equipment allocation, and material logistics.

**Job Type: Full-Time**

## Benefits:

- Health, Dental, and Vision Insurance.
- 401K plus company matching
- Company phone or allowance
- Paid personal leave
- Paid holidays
- Opportunities for growth in a cutting-edge industry.
- Only full-time employees eligible and a waiting period may apply.

**Schedule:** 8 hour shift Monday to Friday

**Work Remotely:** No



## Experience Requirements:

- High school diploma or GED; additional education in project management preferred.
- Minimum 10 years of construction experience.
- Proficiency in reading and interpreting technical documents and project specifications.
- Strong written and verbal communication skills.
- Detail-oriented with good mechanical and computer skills, including Microsoft Office Suite.
- Journeyman Electrician Certification and knowledge of Windows operating systems are advantageous.
- Willingness to travel and work flexible hours, including weekends and overtime.
- Comfortable working in environments with moving mechanical parts, varying weather conditions, and traffic.
- Hazardous Materials Training and IMSA Traffic Signal Technician Certifications are beneficial.

## Salary:

- **\$90,000 to \$120,000 Annually Based on Experience**

## Industry:

**Intelligent Transportation Systems (ITS)  
Communication Networks and Electrical Construction**

## Our Culture is described as:

- Innovative and Forward-Thinking
- Team-Oriented and Collaborative.
- Safety and Quality First
- Commitment to Employee Training and Growth
- Respect and Integrity
- Community and Environmental Responsibility
- Dynamic and Supportive Work Environment

888-4-InLine | [InLine.com](http://InLine.com)

# UNLEASH YOUR POTENTIAL

## Now Hiring Laborers

### Over 30 Positions Available

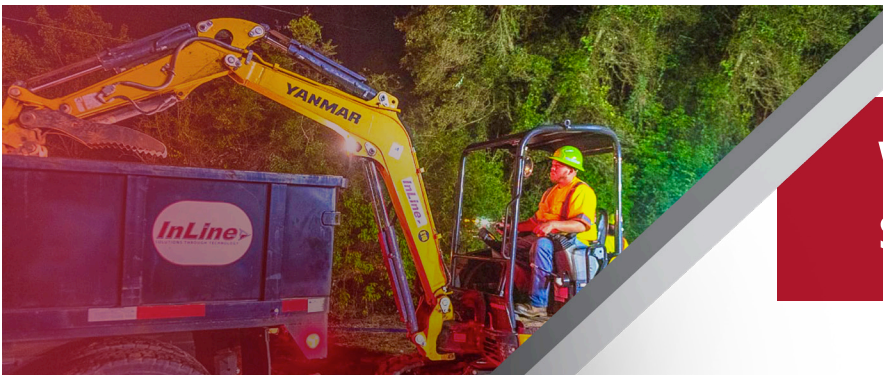
InLine, a leader in the Intelligent Transportation Systems (ITS) and Communication Network Construction industry, is currently seeking OVER 30 individuals to expand our talented team!

#### What We Offer:

- Comprehensive on-the-job training – no experience required!
- Opportunities for skilled laborers to work on state-of-the-art equipment.
- Competitive pay and benefits package, including health insurance.

#### Your Qualifications:

- Valid driver's license (CDL is a plus).
- Ability to work in physically demanding situations
- Eagerness to learn new skills
- A positive attitude and commitment to teamwork



**Wages Starting from  
\$15-\$36/Hour**

Contact us today – Go to work tomorrow! | **334-221-0062** | [jon@InLine.com](mailto:jon@InLine.com)

Learn more about InLine and how to apply | [InLine.com/careers](https://InLine.com/careers)



InLine is an Equal Opportunity Employer. All qualified applicants will receive consideration for employment without regard to race, color, religion, sex, national origin, or protected veteran status and will not be discriminated against on the basis of disability.